

Supervisor user guide and Designer3D mini tutorial

SUMMARY

SETUP AND ACCESS	0
REQUIREMENTS	0
SETUP	0
ACCESS	0
MAIN INTERFACE	1
ACTIVATIONS.....	1
USERS	1
DEALERS	7
LICENSE EXPIRY	7
ON LINE CATALOGUE	8
UPDATE	8
DB UPDATE.....	10
SYNCHRO.....	12
UPLOAD FILES.....	12
UPDATE PROGRAM	13
RECEIVING ORDERS	16
DISPLAYING ORDERS	17
DOWNLOADING ORDERS.....	20
DELETING ORDERS	20
STATISTICS.....	21
MONTHLY SUMMARY	23
SCORE BY OPERATOR.....	23
OPERATOR POINTS DETAIL.....	24
EXPORTING USERS	24
EXPORTING ORDERS.....	25
HANDBOOK	25
DOWNLOADING ORDERS FROM CONFIGURATOR3D	26
DISPLAYING ORDERS FROM C3D.....	26
DOWNLOADING ORDERS FROM C3D.....	28
CREATING AN ORDER WITH DESIGNER3D	30
OPENING AN ORDER WITH DESIGNER3D.....	31
ORDERS CREATED BY THE CURRENT USER.....	31
ORDERS RECEIVED BY ANOTHER USER	32



Via Sernaglia 76 int. 8
31053 Pieve di Soligo
(Treviso) Italy

Phone +39 0438 981034
Fax +39 0438 981063
Vat IT 03060530262



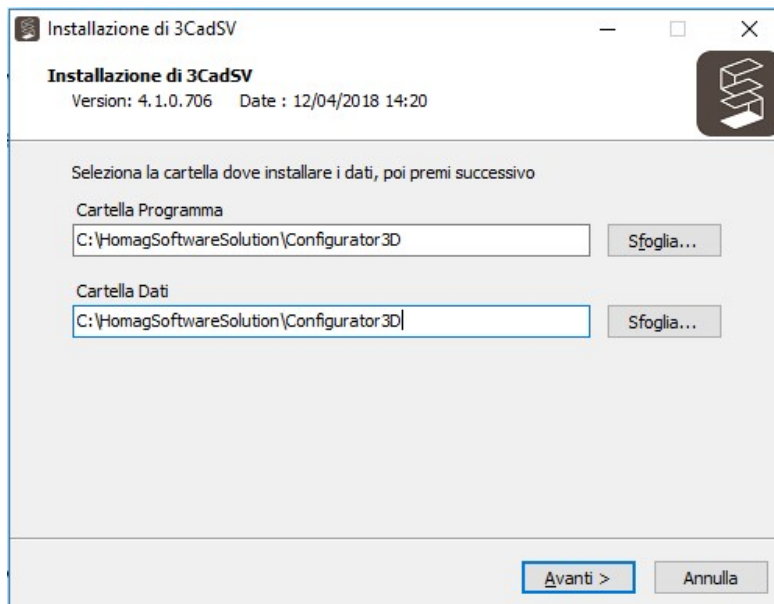
SETUP AND ACCESS

REQUIREMENTS

- The PC must have a Configurator3D valid license with the module M25 enabled
- In order to enable the Supervisor for a Configurator3D license key a request must be sent to the referent Consultant
- Setup file

SETUP

Launch the installation file. Make sure that the paths for Program and Data are the same as for the Configurator3D program, then click "Continue" to move forward until the end of the setup process.



ACCESS

To run the program, double click on the .exe file and insert the password. Password is required for every access.

MAIN INTERFACE

The program displays the following five tabs:



- Receive Orders: to manage the orders
- Activations: to manage the users
- On-line Catalogue: to manage the catalogue and the software updates
- Statistics: To manage the usage statistics
- Handbook: a short user guide

The above described refers to a default installation which has all the tabs available.

There are three types of installation, as listed below, the first two are with fewer tabs:

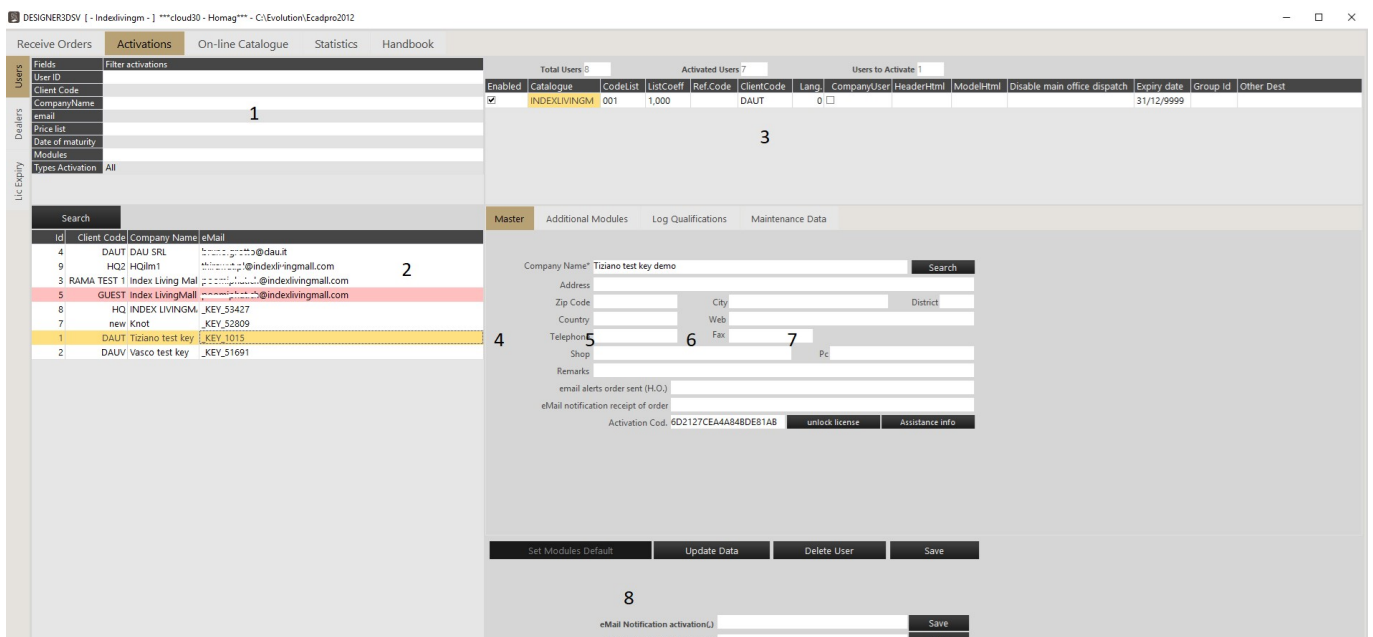
- Type 1: includes the "Receive Orders" tab
- Type 2: includes the "Receive Orders" and the "Activation" tabs
- Type 3: (Default installation) includes all the tabs shown in the picture above

Regardless of the type of installation, "Statistics" and "Handbook" tabs are always present. The parameter which identifies the type installation, is managed by DAU programmer.

ACTIVATIONS

This window is divided in three tabs displayed vertically on the left side of the window: Users, Dealers, Lic Expiry.

USERS



1-SEARCH TOOLS

It is possible to search the users inserting some filters. Input the values and click on:

Search

2-LIST OF USERS

This is how the list of selected users looks like:

Id	Client Code	Company Name	eMail
4	dauv	DAU SRL	bruno.grotto@dau.it
9	HQ2	HQilm1	t...@indexlivingmall.com
3	RAMA TEST 1	Index Living Mal	p...@indexlivingmall.com
5	GUEST	Index LivingMall	...@indexlivingmall.com
8	HQ	INDEX LIVINGM	_KEY_53427
7	new	Knot	_KEY_52809
1	dauv	Tiziano test key	_KEY_1015
2	DAUV	Vasco test key	_KEY_51691

The data displayed are:

- Id: unique number assigned by server
- Client Code: a code assigned by supervisor to a user, usually matches with the id code used in the ERP system for that user. For a new user, the Client Code is always "GUEST", in order to enable him sending orders it is necessary to change this parameter to any string different from "GUEST".
- Company Name: editable in the next window
- eMail: for a user who owns a Configurator3D valid license in his workstation, it coincides with the "_KEY_key number"; for a user who only has a Designer3D license, it is the email inserted in the activation request tab.

The colours of the rows indicate:

- WHITE: active user
- RED: new request, awaiting approval. The request can be deleted clicking on **Delete User** button
- GREEN: disabled user
- LIGHT BLUE: user with expired license
- ORANGE: current selection

3-PERSONAL WINDOW

Total Users 8		Activated Users 7			Users to Activate 1								
Enabled	Catalogue	CodeList	ListCoeff	Ref.Code	ClientCode	Lang.	CompanyUser	HeaderHtml	ModellHtml	Disable main office dispatch	Expiry date	Group Id	Other Dest
<input checked="" type="checkbox"/>	INDEXLIVINGM	001	1,000		DAUV	0	<input checked="" type="checkbox"/>				31/12/9999		

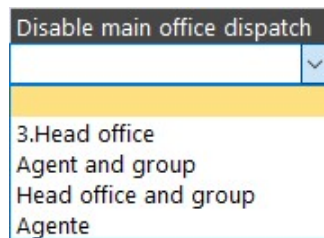
- Enabled: flag to enable the user.
- Catalogue: name of the catalogue enabled for the user.
- CodeList: code of the price list enabled for the user (same of C3D).
- ListCoeff: price list increase/decrease coefficient set for the user, e.g.: 1,01 means +1% increase for that price list.
- Ref.Code: code of the "Agent" assigned to the current user. If a code of another user is written in this field, the current user will be able to send him orders.

For example, with the following settings

Enabled	Catalogue	CodeList	ListCoeff	Ref.Code	ClientCode	Lang.
<input checked="" type="checkbox"/>	INDEXLIVINGM	001	1,000	USER001	DAUV	0

the current user (DAUV), can send orders to:

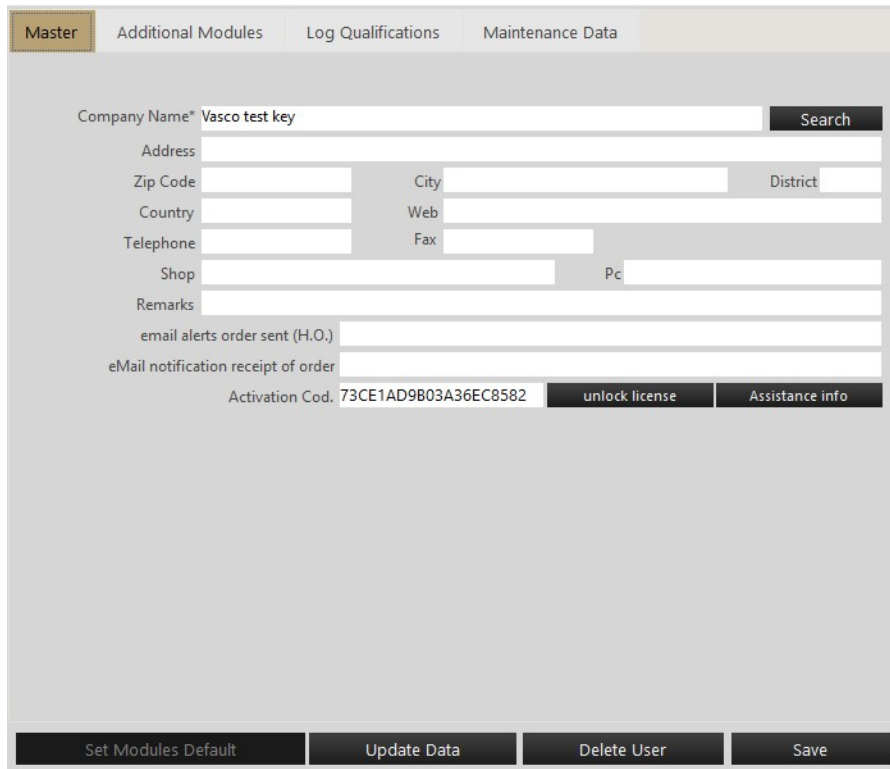
- Other users with ClientCode="DAUV"
 - A user with ClientCode="USER001" (*usually his Agent*)
- ClientCode: is the code assigned by the Supervisor to a user, it may coincide with the id code used in the ERP system for that user.
 - Lang: language, it has the same numeric value set in the catalogue.
 - CompanyUser: defines who is /are the "Order management" operator/s (e.g. office user/s). If flagged, it allows the operator/s to send orders to all the users and is the requirement for downloading orders from the Configurator3D.
 - HeaderHtml: obsolete.
 - ModelHtml: it's possible to assign a specific modelli.html file to a user, such file must be included in the catalogue's HTML folder. In this field the syntax is without file extension, e.g.: if the file name is MODELLIDAUV.HTML, here it is written as MODELLIDAUV.
 - Disable main office dispatch: disables the possibility to send orders to:
 - Head Office: i.e. the company user
 - Agent and Group: i.e. the Agent and the Group assigned
 - Head Office and Group
 - Agent



- Expiry date: expiration date defined for the user
- Group Id: it's possible to assign a Group Id to users. Users with the same Group Id can send orders to each other. This Id can be used in rules development to filter variants/models/articles using the system variable \$ (.GruppoUtente).
- Other Dest: inserting here the Client Code of other users it is possible to allow the current user to send orders to other users. Multiple inserting is allowed with ";" separator.

4-MASTER

Here the supervisor user can insert personal data of the selected user.



Here, some interesting information can be set, for example:

- specify the *email address of the order recipient* who will also be notified of an incoming new order.

email alerts order sent (H.O.)

- specify the *email address of the user* who will be notified when the recipient will have downloaded the order.

eMail notification receipt of order

5-ADDITIONAL MODULES

Is used for enabling a set of standard modules for every new user's activation, if purchased.

Flag the desired modules and click on :

5

Master **Additional Modules** Log Qualifications Maintenance Data

Enabled	Description
<input type="checkbox"/>	3ds
<input type="checkbox"/>	Dwg
<input type="checkbox"/>	Graphic effects
<input type="checkbox"/>	Render
<input type="checkbox"/>	Materials
<input type="checkbox"/>	Views dimensions
<input type="checkbox"/>	*** reserved ***
<input type="checkbox"/>	*** reserved ***
<input type="checkbox"/>	Imp\Exp sketchup
<input type="checkbox"/>	Renderfarm
<input type="checkbox"/>	Walls
<input type="checkbox"/>	Accessories
<input type="checkbox"/>	Orders tracking
<input type="checkbox"/>	ShopAdmin
<input type="checkbox"/>	Export VR 360
<input type="checkbox"/>	Gallery Expo

6-LOG QUALIFICATIONS

Mark "Activation Log" to display the list of all enabling / disabling operations performed for the current user:

6

Master Additional Modules **Log Qualifications** Maintenance Data

Activation Log

User Id	Catalogue	Flag	Date
1	INDEXLIVINGM	<input checked="" type="checkbox"/>	11/04/2018
1	INDEXLIVINGM	<input checked="" type="checkbox"/>	23/04/2018

7-MAINTENANCE DATA

Allows the Supervisor user to do massive maintenance on user data.

Possible operations that can be performed:

- Change the Client Code for ALL users
- Change the Price List for ALL users
- Change the Modelli.html file for ALL users

Type the old values in the fields on the left (A) and type the new values in the fields on the right (B), then click on the correspondent “Run” button/s (C) to apply the changes.

-select users on the list on the left by using CTRL+click (for multiple selection) and proceed as follows:

- Mark the “ignores” box (D) to disable users from using the current catalogue. “Ignores” will turn into Disable
- Mark the “ignores” box (D) to enable users using the current catalogue (catalogues are displayed on the combo-box on the Receive Orders tab). “Ignores” will turn into enables
- Modify the expiry date or enable a specific module. Fill in the fields and click on RUN button (E).

8- OTHER FEATURES

The last two fields are not specific for the current user, they are “general settings”:

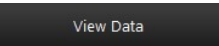
- eMail Notification activation: insert here the email addresses that will receive a notification when a new activation request is created. Multiple entries are allowed using “;” separator.
- Enable additional catalogs: enables additional catalogues for the users (for South America area only)

DEALERS

The function is no longer maintained.

LICENSE EXPIRY

Here the program shows the licenses that are going to expire or expired already.

By clicking on the  button it is possible to monitor the expiring licenses. In order to send an automatic warning to the interested users, a *print-server installation* is required.

DESIGNER3DSV [- Indexlivingm -] ***cloud30 - Homag*** - C:\Evolution\Ecadpro2016

		Receive Orders	Activations	On-line Catalogue	Statistics	Handbook				
		ID	COM.NAME	EMAIL CLI	LANGUA	EXP DATE	WARNING DA	COM EMAIL	AGE EMAIL	WARNING STRENGTH
Users	<input checked="" type="checkbox"/>	100427		@o li.it		0 31/12/2020				NO
	<input type="checkbox"/>	103897		_KEY_51468		0 30/09/2017				NO
	<input type="checkbox"/>	104465		_KEY_51674		0 31/12/2016				NO
Dealers	<input type="checkbox"/>	105653	Akademia Architekury	@al .pl		1 01/09/2017				NO
	<input type="checkbox"/>	105686		_KEY_52013		0 31/07/2017				NO
	<input type="checkbox"/>	105688		_KEY_52014		0 31/07/2017				NO
Lic Expiry	<input type="checkbox"/>	108262	Studio	@ei io.com		0 08/08/2019				NO
	<input type="checkbox"/>	108270	Studio	@e io.com		0 08/08/2019				NO

ON LINE CATALOGUE

This window is divided into three tabs: Update, Update Files, Update Program.


UPDATE

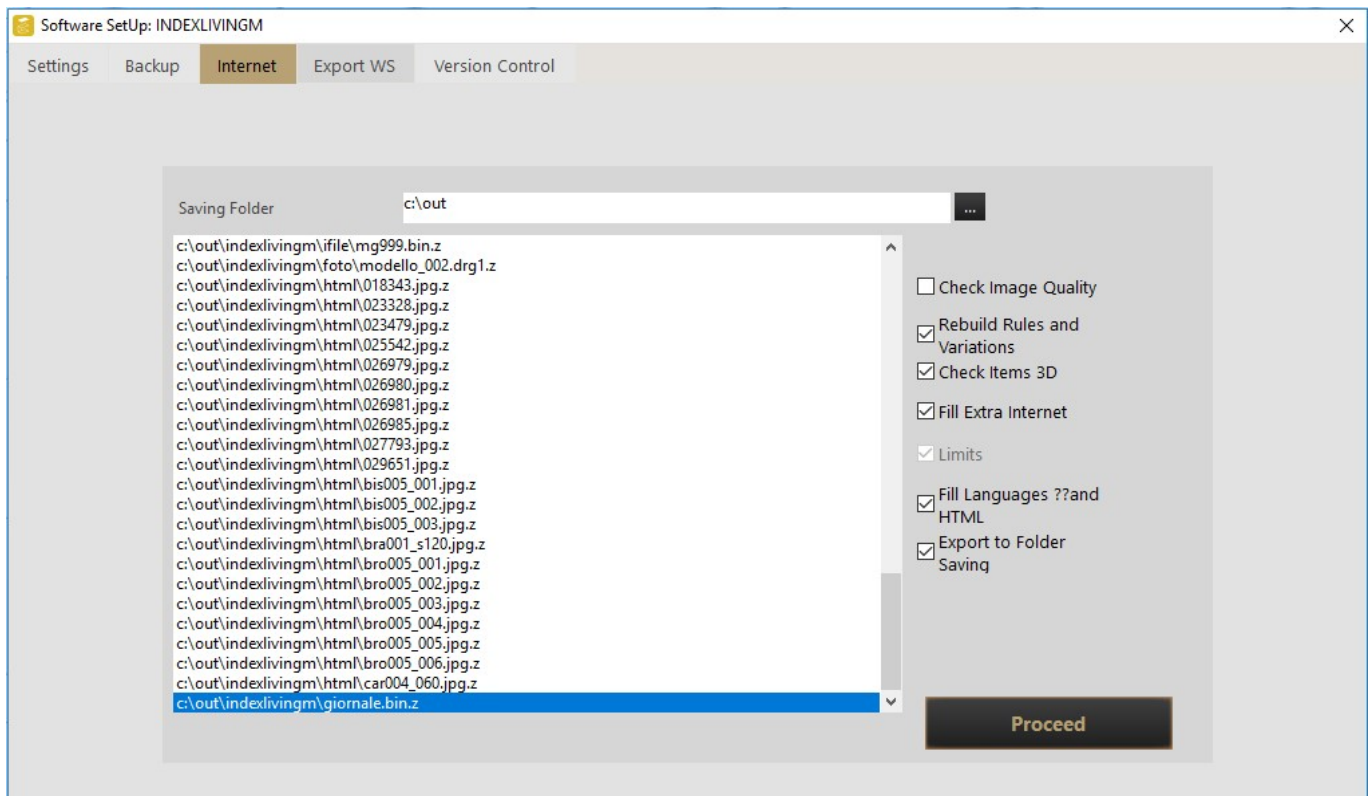
Its main function is to update the catalogue data on server. The interface appears as shown in the picture below:



For updating the catalogue, it is required to have the catalogue files in "C:\out" folder.

Below is explained how to create files in this folder:

- 1- Open Configurator3D and click on the  button.
- 2- Select the "Internet" tab.



- 3- On the right side of the window there are some options to be flagged as suggested in the picture above:
- Check image quality: if flagged it compresses all the images with dimension > 512x512 pixels.
 - Rebuild rules and variations: creates *.erx.z files for the rules and *.bin.z for variants.
 - Check items 3D: compresses *.3ds files in *.dr3d.z files.
 - Fill extra internet: it compiles the models in *.bin files.
 - Fill languages and HTML: it compiles the files *.tr using ALINGUE translations data.
 - Export to Folder Saving: copies the files in c:\out.

4- Click on "Proceed".

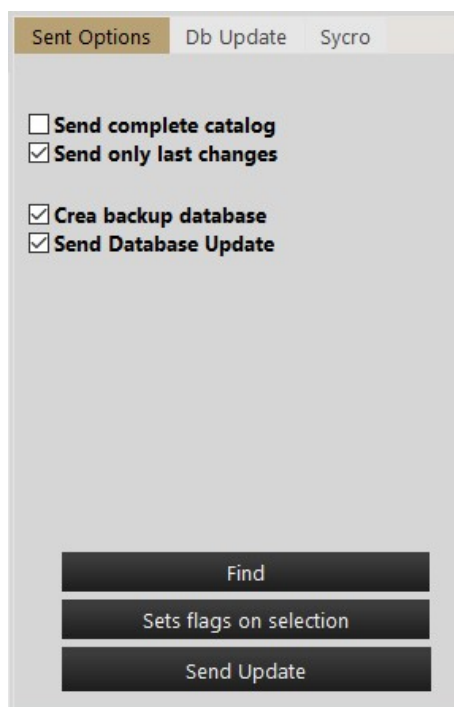
The process is over when the file "giornale.bin.z" is copied. All the files needed are now in the c:\out folder.

"giornale.bin.z" contains the list of all the files of the catalogue plus some extra information such as: the last modification date and time and file dimension.

When a Designer3D user opens the software, this is the first file downloaded. Designer3D compares this file with the one on server, if there are more recent files on the server, the software automatically downloads and updates them.

5- Close Configurator3D.

6- Open Supervisor software and move to "On-line catalogue" tab. On the right part there are some options:



- Send complete catalogue: copies to the server all the files that are in c:\out.
- Send only last changes: the program compares the files in c:\out and the files in the server, and copies on the server only the updated and new files.
- Create backup database: creates the .bak file of the catalogue database.
- Send Database backup: it copies the .bak files to the server.

TIP: It is suggested to send .bak file to server when changes have been made to items, prices and translations compared to the previous version of the catalogue.

Choose if you want to send complete/last changes then the advice is to keep the flag on the last 2 buttons (Create and Send database Update).

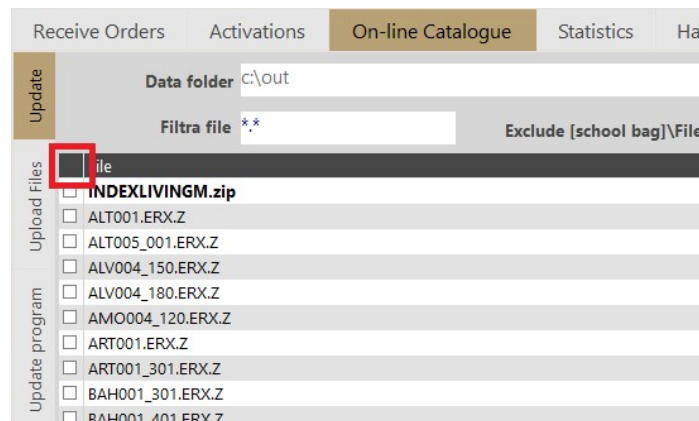
7- By clicking on **Find**, the list of files found will appear on the left.

It is possible to filter the list of results by using the two fields on the top of the screen:



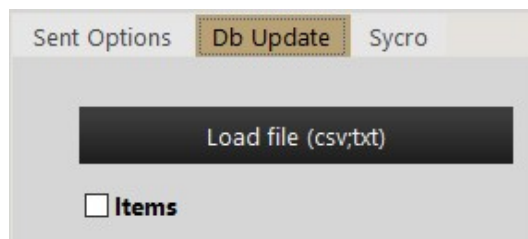
- Filter file: type the file extension between “*” characters, as shown in the image above, to display only files with that extension.
- Exclude: excludes from the list files named as specified between the “*” characters (*file_name*).

8- You can manually select individual files that you wish to upload then click on **Sets flags on selection** or double click on the black square on the top-left corner if you wish to select all the files:



9- Click on **Send Update** to copy the files to the server.

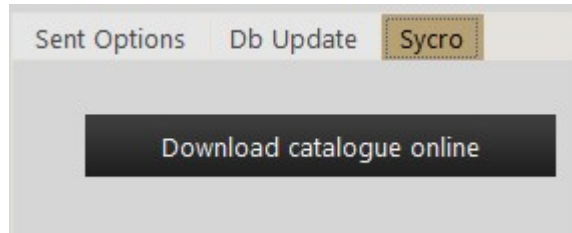
DB UPDATE



With this functionality it is possible to update some tables of the catalogue's database. For example, marking "Items" the "Articoli" table will be updated.

Mark the required tables e.g. "Items", then click on "Load file" button. It's possible to upload .csv and .txt files.

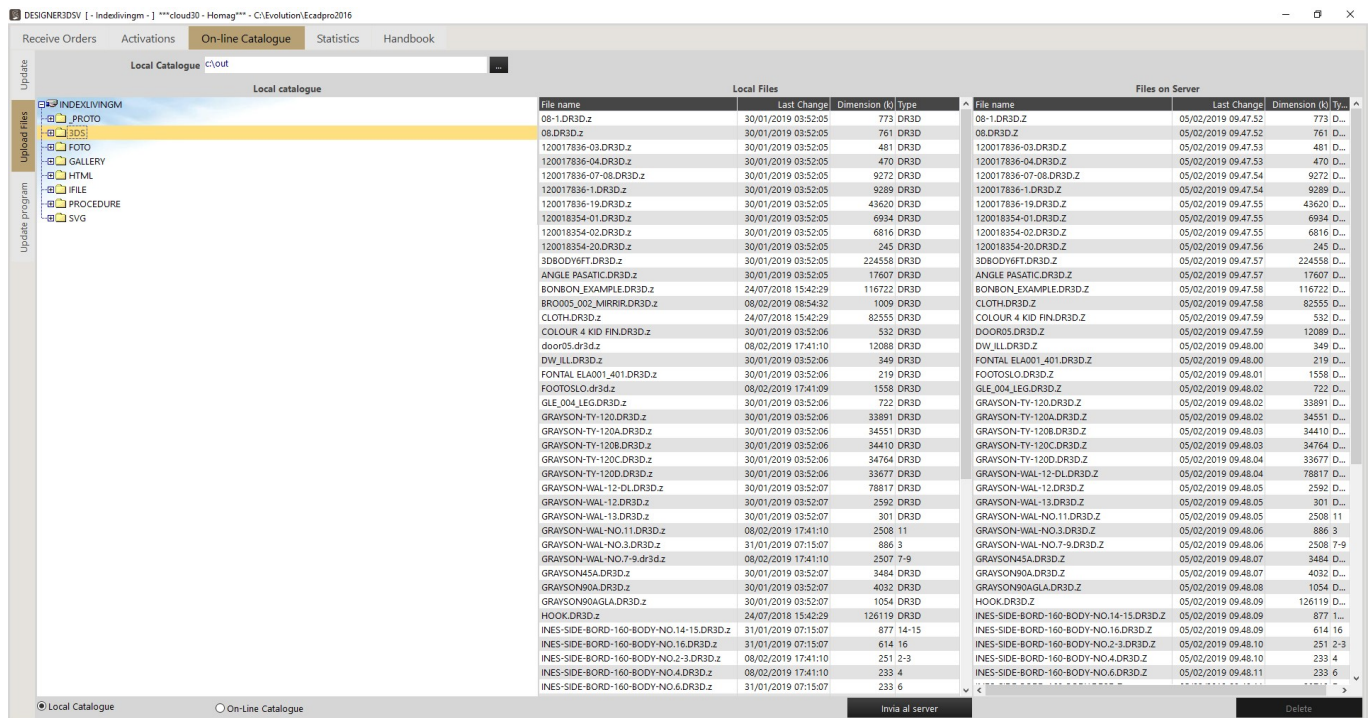
SYNCHRO



This functionality downloads the catalogue online to the folder c:\out.

UPLOAD FILES

From this window it is possible to compare the files in the C:/out path to those in the server.

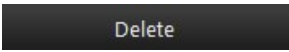


Select a folder or a sub-folder on the Local Catalogue window on the left. Then two actions are possible:

UPDATE SINGLE FILES FROM LOCAL PATH TO SERVER

-select Local Catalogue, select a file from "Local files" list and click on button.

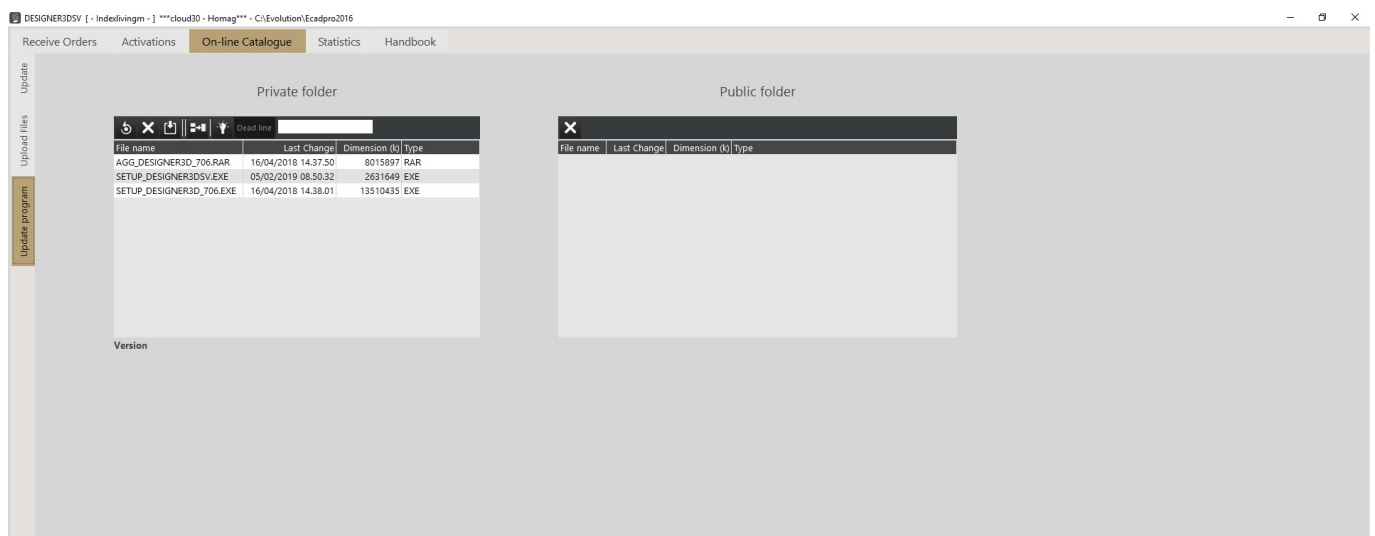
DELETE SINGLE FILES FROM SERVER

-select On-Line Catalogue, select a file from "Files on Server" lists and click on  button.

UPDATE PROGRAM

The window on the left represents the Private folder. The access to this virtual folder is exclusively reserved to the Supervisor User and to software developers (DAU-Homag).

The window on the right represents the Public folder, it is used by the supervisor user to update the Designer3D software for all the users.



The window on the left displays the setup and update files of the Designer3D software and Designer3D Supervisor software published by the developers. For example, in the below image the files are:

- SETUP_DESIGNER3DSV.EXE: setup of Designer3D Supervisor program.
- SETUP_DESIGNER3D_706.EXE: setup of Designer3D program (where 706 is the software version).
- AGG_DESIGNER3D_706.EXE: update of Designer3D program (where 706 is the software version).

Private folder

Dead line <input type="text" value="13/02/2019"/>			
File name	Last Change	Dimension (k)	Type
AGG_DESIGNER3D_706.RAR	16/04/2018 14.37.50	8015897	RAR
SETUP_DESIGNER3DSV.EXE	05/02/2019 08.50.32	2631649	EXE
SETUP_DESIGNER3D_706.EXE	16/04/2018 14.38.01	13510435	EXE

Version

The buttons on the toolbar are:



Refresh: refreshes the content of the folder.



Delete: deletes a selected file.



Download: downloads a file to local path.



Public Update: copies the selected file into the Public folder. This operation is required when the supervisor user needs to update all the Designer3D software of all the users. The supervisor must select the file (in this case AGG_DESIGNER3D_706.EXE) and then click on the button.

When a Designer3D user opens the software after this operation, a message will appear on the screen:

[New software version XXX: do you want to update?]

and every single user can choose to update the software or not.

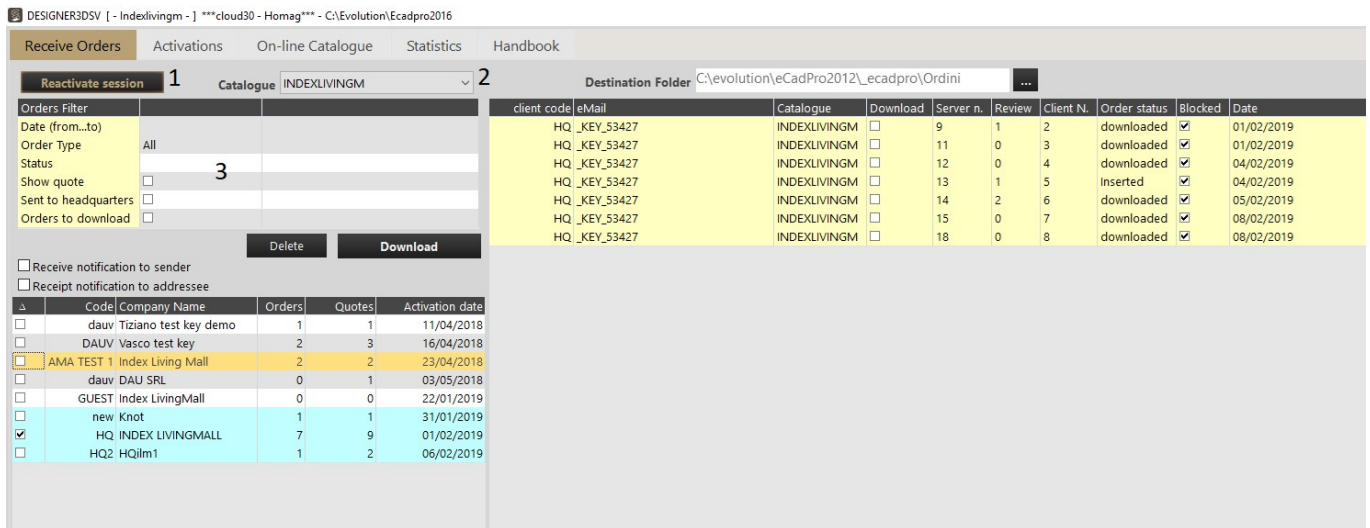


When a deadline is set, the public update becomes mandatory: it does the same function previously described but it allows the user to postpone the update till the date specified. After this date the update will be mandatory for all the users.

RECEIVING ORDERS

This is the main window to manage the orders, the main activities performed here are:

- display orders
- download orders

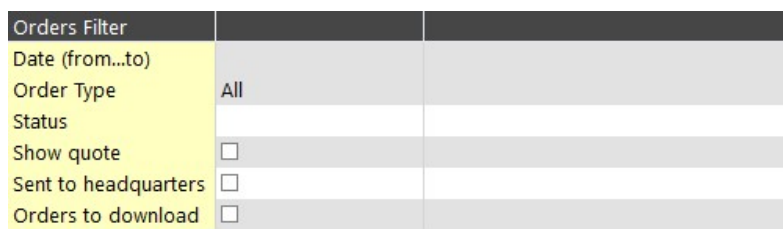


1-**Reactivate session**: this button reactivates the session whenever the supervisor remains inactive for over an hour.

If over 4 hours elapsed from last operation, login will be required.

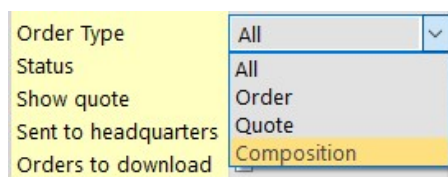
2-**Catalogue**: it shows the current catalogue.

3-**Filters**:



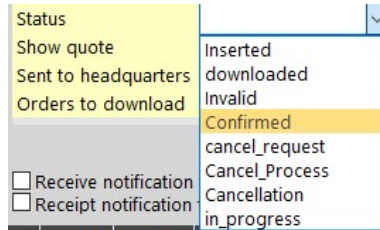
It is possible to filter the orders by:

- Date (from...to)
- Order type: orders can be filtered according to the tag assigned during the order creation:

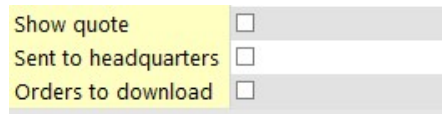


Order/Quote/Composition are simply tags associated to an order and they have no other meaning nor function.

-Status: it is possible to filter the status:




And to apply other filters:



- Show Quote: it shows in the right part of the screen other information for each order: Check and Amount. This button shows all the orders created and saved by the user, including those not sent. It is only a visualization feature, it is not possible to select orders to download with this flag active.
 - Check: shows the number of times the user has modified and saved that order.
 - Amount: quotation of that order.
- Sent to headquarters: it displays only the orders sent to user: 0000-Headquarter (default).
- Orders to download: it displays the users in the order summary list that have orders not downloaded yet.

DISPLAYING ORDERS

To display the orders, select the filters to apply, then click on  button. The order summary divided by user is displayed as shown below:

ID	Code	Company Name	Orders	Quotes	Activation date
<input type="checkbox"/> 1	DAUT	Tiziano test key demo	1	1	11/04/2018
<input type="checkbox"/> 2	DAUV	Vasco test key	2	3	16/04/2018
<input type="checkbox"/> 3	A TEST 1	Index Living Mall	2	2	23/04/2018
<input type="checkbox"/> 4	DAU	DAU SRL	0	1	03/05/2018
<input type="checkbox"/> 5	GUEST	Index LivingMall	0	0	22/01/2019
<input type="checkbox"/> 7	new	Knot	1	1	31/01/2019
<input type="checkbox"/> 8	HQ	INDEX LIVINGMALL	7	9	01/02/2019
<input type="checkbox"/> 9	HQ2	HQilm1	1	2	06/02/2019


The columns indicate:

- ID: Id number of the user
- Code: client code of the user
- Company Name: description
- Orders: number of orders created by user [with Order type: "order"]
- Quotes: number of orders created by user [with Order type: "quote"]

- Activation date: Date of license activation

The colours indicate:

- GREY and WHITE: the colours are alternating to improve the rows visualization.
- GREEN: it means that for that user there are orders to download.
- ORANGE: current selection.

With the recent update of the Supervisor software it is possible to search through orders using also the orange row, highlighted with the red square in the above image. In this orange row it is possible to manually input ID, Code and Company Name, then click on the  button to find the necessary orders.

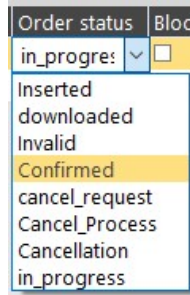
To display the list of the orders for a user mark the corresponding box at the beginning of the row. The list of the orders will be displayed on the right part of the window:

	ID	Code	Company Name	Orders	Quotes	Activation date
<input type="checkbox"/>	1	DAUT	Tiziano test key demo	1	1	11/04/2018
<input checked="" type="checkbox"/>	2	DAUV	Vasco test key	2	3	16/04/2018
<input type="checkbox"/>	3	A TEST 1	Index Living Mall	2	2	23/04/2018
<input type="checkbox"/>	4	DAU	DAU SRL	0	1	03/05/2018
<input type="checkbox"/>	5	GUEST	Index LivingMall	0	0	22/01/2019
<input type="checkbox"/>	7	new	Knot	1	1	31/01/2019
<input type="checkbox"/>	8	HQ	INDEX LIVINGMALL	7	9	01/02/2019
<input type="checkbox"/>	9	HQ2	HQilm1	1	2	06/02/2019

Destination Folder C:\evolution\eCadPro2012\ecadpro\Ordini									
client code	eMail	Catalogue	Download	Server n.	Review	Client N.	Order status	Blocked	Date
DAUV_KEY_51691	INDEXLIVINGM	<input type="checkbox"/>	3	0	1	downloaded	<input type="checkbox"/>	23/04/2018	
DAUV_KEY_51691	INDEXLIVINGM	<input type="checkbox"/>	8	0	3	downloaded	<input checked="" type="checkbox"/>	31/01/2019	

The columns indicate:

- client code: client code of the user.
- eMail: email or key_number of the user.
- Catalogue: current catalogue.
- Download: when flagged, it enables the download of the order.
- Server n.: number of the order assigned by the server (unique).
- Review: number of the order review.
- Client n.: number of the order in local workstation referred to the creator of the order.
- Order Status: status of the order:
 - Inserted: a new order gets automatically the status "Inserted".
 - downloaded: a downloaded order gets automatically the status "downloaded".
 - Invalid/Confirmed/cancel_request/Cancel_process/Cancellation/in_progress.



- Blocked: if an order is blocked the creator user can't create a review of that order.
- Date: creation date of the order.

The colours WHITE and YELLOW are alternating to improve the rows visualization, they have no technical meaning.

DOWNLOADING ORDERS

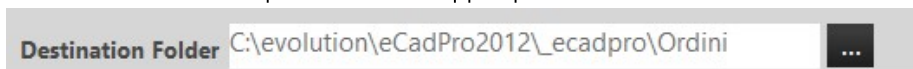
To download one or more orders:

- 1- in the right part of the screen mark the box in the Download column:

Destination Folder C:\Users\Vasco\Desktop									
client code	eMail	Catalogue	Download	Server n.	Review	Client N.	Order status	Blocked	Date
DAU_KEY_51691		INDEXLIVINGM	<input checked="" type="checkbox"/>	3	0	1	in_progress	<input type="checkbox"/>	23/04/2018
DAU_KEY_51691		INDEXLIVINGM	<input type="checkbox"/>	8	0	3	cancel_request	<input type="checkbox"/>	31/01/2019
DAU_KEY_51691		INDEXLIVINGM	<input checked="" type="checkbox"/>	20	0	4	Inserted	<input type="checkbox"/>	12/02/2019
DAU_KEY_51691		INDEXLIVINGM	<input type="checkbox"/>	25	1	10	downloaded	<input type="checkbox"/>	12/02/2019
DAU_KEY_51691		INDEXLIVINGM	<input checked="" type="checkbox"/>	26	5	11	Inserted	<input type="checkbox"/>	14/02/2019
DAU_KEY_51691		INDEXLIVINGM	<input type="checkbox"/>	26	6	11	Inserted	<input type="checkbox"/>	14/02/2019
DAU_KEY_51691		INDEXLIVINGM	<input type="checkbox"/>	28	0	13	cancel_request	<input type="checkbox"/>	14/02/2019

- 2- and click on **Download** button.

The orders will be saved into the folder specified in the upper part of the window:



Clicking on the “...” button it is possible to change the path.

The following flags allow to send a notification to the sender and to the addressee when an order is downloaded:

Receive notification to sender
 Receipt notification to addressee

DELETING ORDERS

To delete an order:

- 1- in the right part of the screen insert the flag in the Download column:

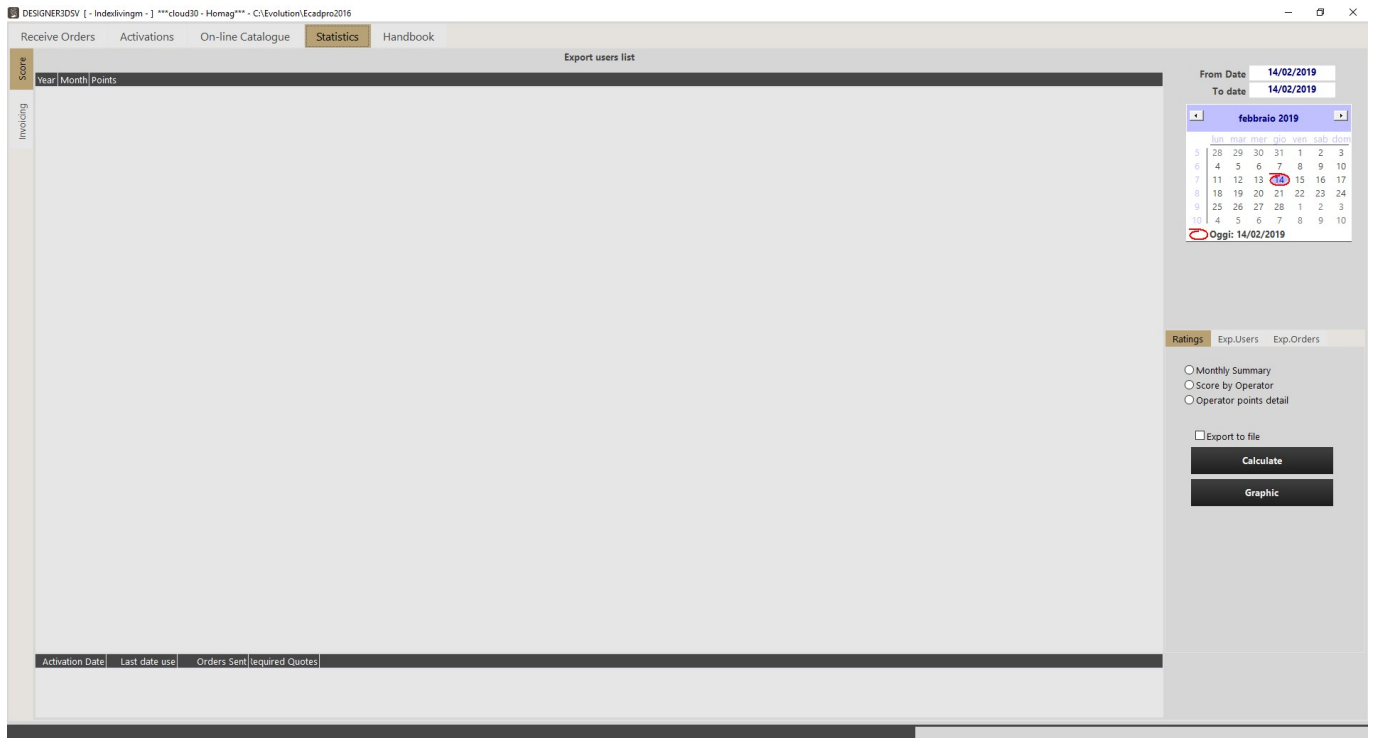
Destination Folder C:\Users\Vasco\Desktop									
client code	eMail	Catalogue	Download	Server n.	Review	Client N.	Order status	Blocked	Date
DAU_KEY_51691		INDEXLIVINGM	<input checked="" type="checkbox"/>	3	0	1	in_progress	<input type="checkbox"/>	23/04/2018
DAU_KEY_51691		INDEXLIVINGM	<input type="checkbox"/>	8	0	3	cancel_request	<input type="checkbox"/>	31/01/2019
DAU_KEY_51691		INDEXLIVINGM	<input checked="" type="checkbox"/>	20	0	4	Inserted	<input type="checkbox"/>	12/02/2019
DAU_KEY_51691		INDEXLIVINGM	<input type="checkbox"/>	25	1	10	downloaded	<input type="checkbox"/>	12/02/2019
DAU_KEY_51691		INDEXLIVINGM	<input checked="" type="checkbox"/>	26	5	11	Inserted	<input type="checkbox"/>	14/02/2019
DAU_KEY_51691		INDEXLIVINGM	<input type="checkbox"/>	26	6	11	Inserted	<input type="checkbox"/>	14/02/2019
DAU_KEY_51691		INDEXLIVINGM	<input type="checkbox"/>	28	0	13	cancel_request	<input type="checkbox"/>	14/02/2019

2- click on **Delete** button.

The status of the orders changes into "cancel_request".
 As for the download order process, it works also with multiple orders.

STATISTICS

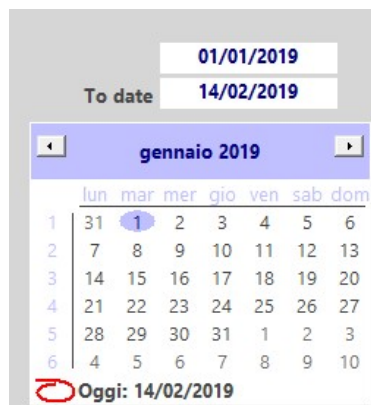
From this window the Supervisor can monitor the use that the operators make of the Designer3D program:



Supervisor software has an evaluating system based on "points": roughly the criterion is: a designer3D user collects about 0.5 points every 15 days of Designer3D usage. It means 1 point per month.

To check the usage the Supervisor must:

- first, select a time period:



- then, select the type of data visualization and click on "Calculate"

MONTHLY SUMMARY

Displays the total points divided by month:

Year	Month	Points
2019	GENNAIO	2.03
2019	FEBBRAIO	4.93

SCORE BY OPERATOR

Displays the total points divided by user and detailed by month:

USER ID	CLIENT COD.	EMAIL	CATALOGUE	GENNAIO	FEBBRAIO	Total
1	DAU	_KEY_1015	INDEXLIVINGM	0	0	0,00
2	DAU	_KEY_51691	INDEXLIVINGM	0	0	0,00
3	RAMA TEST 1	'@indexlivingmall.com	INDEXLIVINGM	1	1	2,00
4	DAU	bruno.grotto@dau.it	INDEXLIVINGM	1	1	2,00
5	GUEST	'@indexlivingmall.com	INDEXLIVINGM	0	0	0,00
7	new	_KEY_52809	INDEXLIVINGM	0,03	1	1,03
8	HQ	_KEY_53427	INDEXLIVINGM	0	1	1,00
9	HQ2	'@indexlivingmall.com	INDEXLIVINGM	0	0,93	0,93
10	DAU	_KEY_52499	INDEXLIVINGM	0	0	0,00

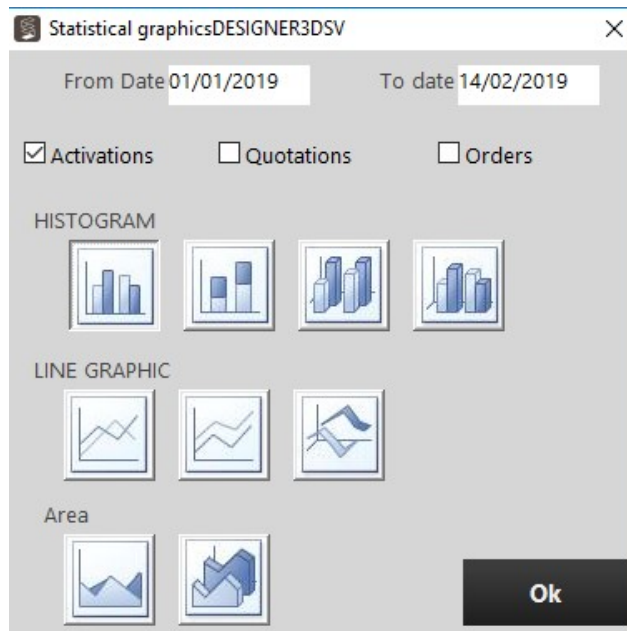
OPERATOR POINTS DETAIL

This option is no longer used.

Export to file allows exporting the results in .txt format.

By clicking on **Graphic** it is possible to export some graphic charts for:

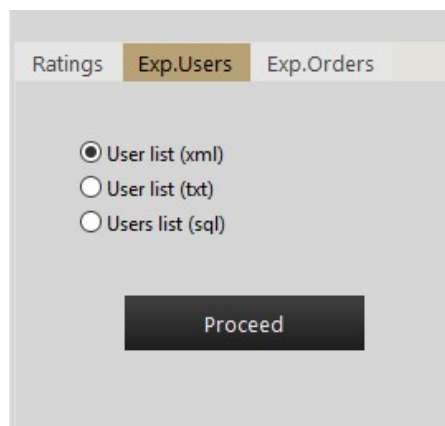
- Licenses activation
- Quotations
- Orders detail



EXPORTING USERS

It is possible to export the list of users in XML, TXT or SQL format.

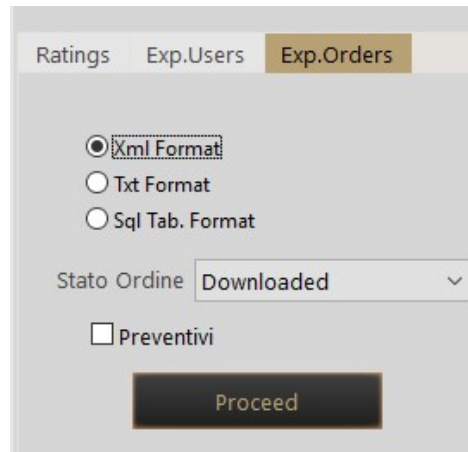
In case of SQL format, the program will save the list on STATISTICHEV table inside the ECADMASTER database:



EXPORTING ORDERS

It is possible to export the list of orders in XML, TXT or SQL format.

In case of SQL format, the program will save the list on ORDINISV table inside the ECADMASTER database:



It is possible to filter the Order by the status and select only the Quotations if needed.

HANDBOOK

Select this tab to access a small user-guide of the Supervisor software.

DOWNLOADING ORDERS FROM CONFIGURATOR3D

It is also possible to download orders without the use of Supervisor software, but directly from Configurator3D software. To do this, the requirements are:

- The PC must have a Configurator3D valid license with the module M25.
- Abilitation for that key number, a request must be forwarded to your Consultant.
- Set the parameter:

`connettiinternet =designer3d`

into the ecadpro.ini file or in general =name of 3cadLite program. The ecadpro.ini file is in the path
 Disc:\Homagsoftwaresolution\Configurator3d\

DISPLAYING ORDERS FROM C3D

Open C3D, select the catalogue and press Open

In the window, select the "Web Orders" sheet:

The screenshot shows the 'Orders uploading' window with the 'Web Orders' tab selected. The folder path is C:\evolution\ecadpro2016_ecadpro\Ordini. The 'Order Type' dropdown is set to 'All'. The 'Status' dropdown is set to 'All'. The table below shows the list of orders:

	Code	Sender	Server N.	Review	Shop N.	Status	Delete	Blocked	Date	Type
<input type="checkbox"/>	DAUT	Tiziano test key der	1	0	10	Downloaded	<input type="checkbox"/>	<input checked="" type="checkbox"/>	12/04/2018 00:00	Order
<input type="checkbox"/>	DAUV	Vasco test key	3	0	1	In_Process	<input type="checkbox"/>	<input type="checkbox"/>	23/04/2018 00:00	Order
<input type="checkbox"/>	DAUV	Vasco test key	8	0	3	Downloaded	<input type="checkbox"/>	<input type="checkbox"/>	31/01/2019 00:00	Order
<input type="checkbox"/>	RAMA TEST 1	Index Living Mall	2	0	1	Downloaded	<input type="checkbox"/>	<input checked="" type="checkbox"/>	23/04/2018 00:00	Order
<input type="checkbox"/>	RAMA TEST 1	Index Living Mall	4	0	2	Downloaded	<input type="checkbox"/>	<input checked="" type="checkbox"/>	23/04/2018 00:00	Order
<input type="checkbox"/>	new	Knot	7	1	1	Inserted	<input type="checkbox"/>	<input type="checkbox"/>	31/01/2019 00:00	Order
<input type="checkbox"/>	new	Knot	7	0	1	Downloaded	<input type="checkbox"/>	<input type="checkbox"/>	31/01/2019 00:00	Order
<input type="checkbox"/>	HQ	INDEX LIVINGMALL	9	1	2	Downloaded	<input type="checkbox"/>	<input checked="" type="checkbox"/>	01/02/2019 00:00	Order
<input type="checkbox"/>	HQ	INDEX LIVINGMALL	11	0	3	Downloaded	<input type="checkbox"/>	<input checked="" type="checkbox"/>	01/02/2019 00:00	Order
<input type="checkbox"/>	HQ	INDEX LIVINGMALL	12	0	4	Downloaded	<input type="checkbox"/>	<input checked="" type="checkbox"/>	04/02/2019 00:00	Order
<input type="checkbox"/>	HQ	INDEX LIVINGMALL	13	1	5	Inserted	<input type="checkbox"/>	<input checked="" type="checkbox"/>	04/02/2019 00:00	Order
<input type="checkbox"/>	HQ	INDEX LIVINGMALL	14	2	6	Downloaded	<input type="checkbox"/>	<input checked="" type="checkbox"/>	05/02/2019 00:00	Order
<input type="checkbox"/>	HQ	INDEX LIVINGMALL	15	0	7	Downloaded	<input type="checkbox"/>	<input checked="" type="checkbox"/>	08/02/2019 00:00	Order
<input type="checkbox"/>	HQ	INDEX LIVINGMALL	18	0	8	Downloaded	<input type="checkbox"/>	<input checked="" type="checkbox"/>	08/02/2019 00:00	Order
<input type="checkbox"/>	HQ2	HQilm1	16	2	1	Inserted	<input type="checkbox"/>	<input type="checkbox"/>	06/02/2019 00:00	Order

At the bottom of the window, there are checkboxes for 'Notifica ricezione a mittente' and 'Notifica ricezione a destinatario', and buttons for 'View', 'Preview', 'Download Order', 'Delete', and 'Open'.

The first part allows modifying the folder path for the orders and applying display filters:

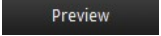
- by Sender
- by Date (From Date - To date)
- by Order Type (this is only a tag, not a technical specification of type of order)
- by Status



Fill in the required filters and click on  button to display the orders.

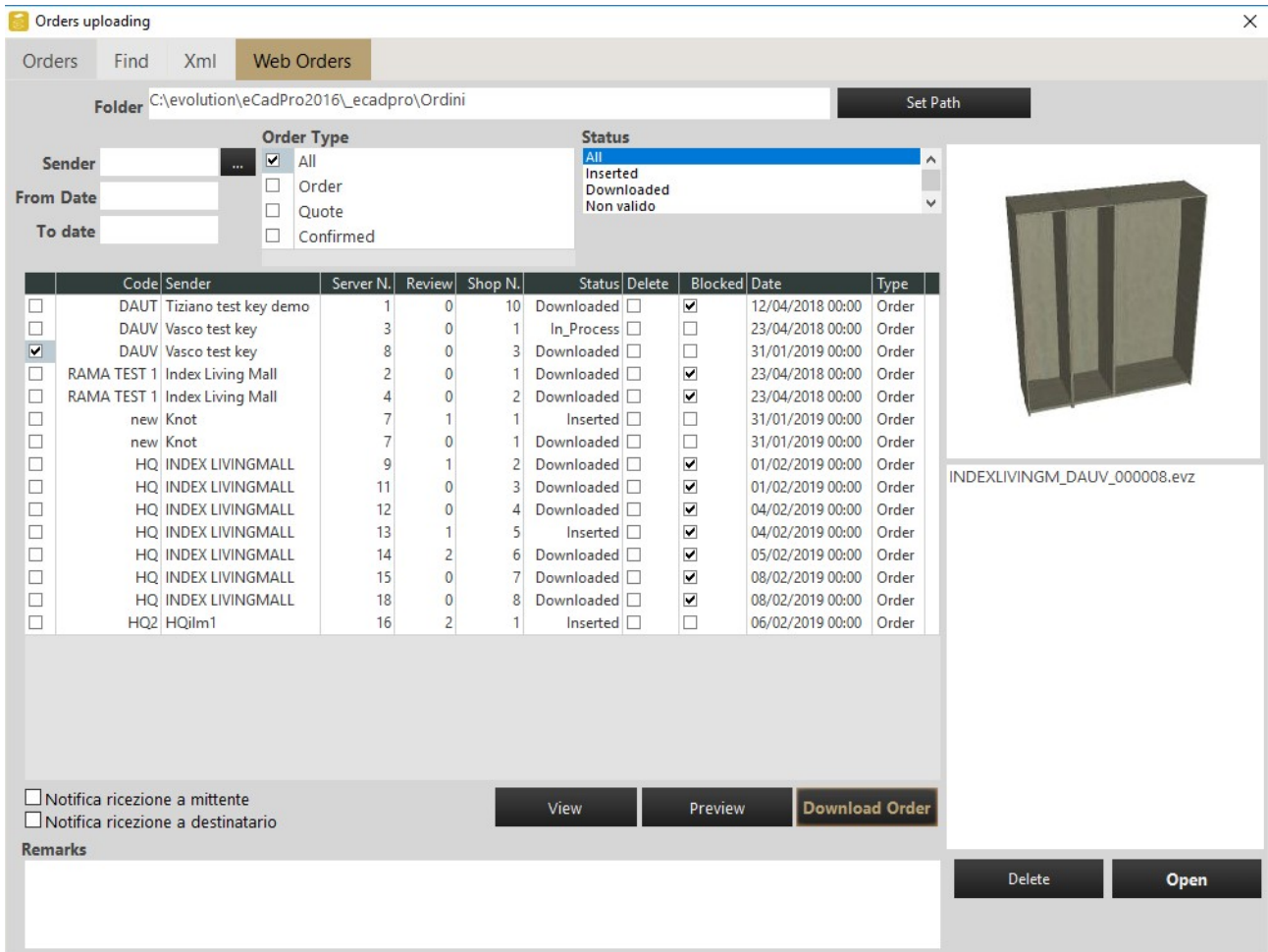
The orders will be displayed with the following information in columns:

- Selection box
- Code: client code
- Sender: order creator
- Server n: number of the order with server progressive unique numbering
- Review: revision number of the order
- Shop n: client number of the order
- Status: status of the order
- Blocked: if flagged, the creator user is not allowed to create a review of the order
- Date: date of creation
- Type: order type

By flagging an order in the first column, it is possible to see its graphic preview by clicking on the  button.

DOWNLOADING ORDERS FROM C3D

To download an order, simply flag the box at the beginning of the row (1st column) and click on **Download Order** button:



It is possible to download more orders by flagging them in the first column and clicking on the **Download Order** button.

In the right part of the window the name of the file downloaded will be displayed with the following format:

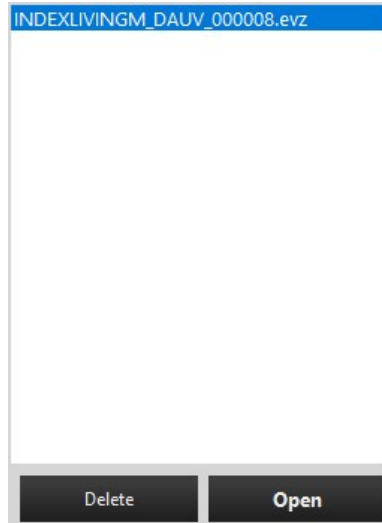
CATALOGUENAME_CODCLI_SERVERNUMBER.evz

This file is now saved in the folder specified in the upper part of the window:



The status of the order changes into "Downloaded".

To open an order select it from the list visible on the right and click on the **Open** button:



The **Order Header** tab displays the Header info and the **Configurator** tab displays the graphic representation of the order.

The order will be automatically numbered with the first "free" number available on the Configurator 3D workstation.

If the order includes a room plan this will be shown in C3D since this information is saved in the .evz file.

In order to delete the downloaded order (locally) select it first, then click on the **Delete** button.

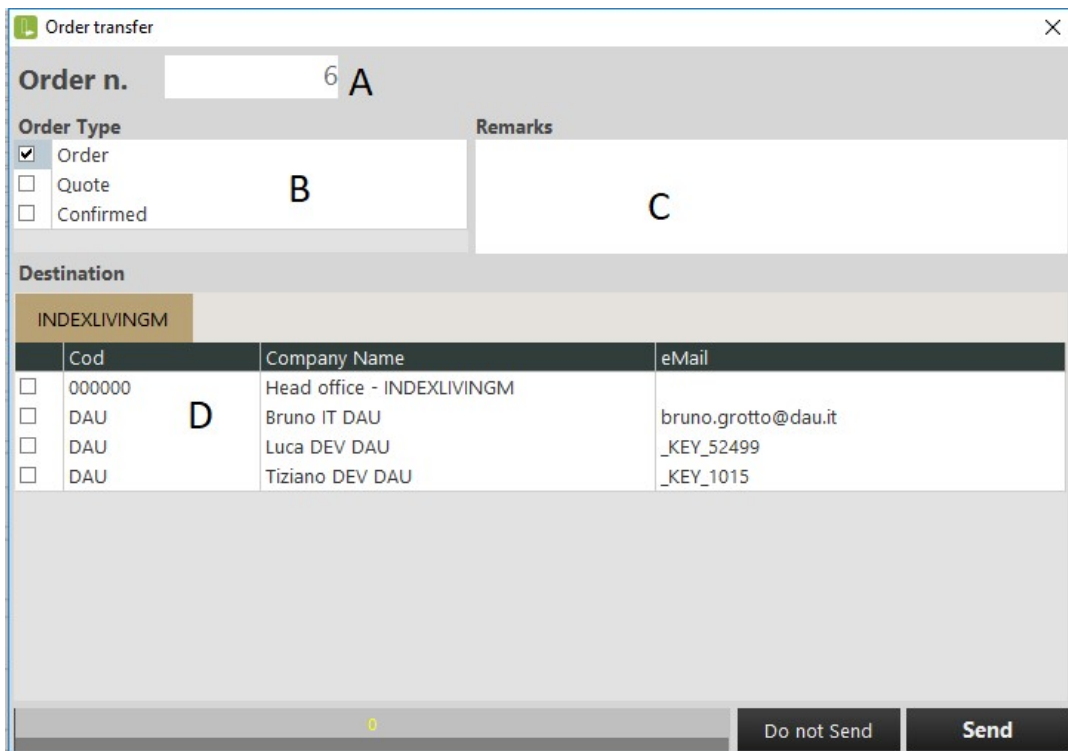
CREATING AN ORDER WITH DESIGNER3D

After the activation, open Designer3D and create a composition using any available catalogue.

1-When finished, click on the  Save button to save the order in the local path:

DISC:\Configurator3D\designer3d_ecadpro\ordini

and the following window will appear:



Order transfer

Order n. 6 A

Order Type

Order
 Quote
 Confirmed

Remarks

B C


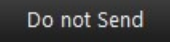
Destination

	Cod	Company Name	eMail
<input type="checkbox"/>	000000	Head office - INDEXLIVINGM	
<input type="checkbox"/>	DAU D	Bruno IT DAU	bruno.grotto@dau.it
<input type="checkbox"/>	DAU	Luca DEV DAU	_KEY_52499
<input type="checkbox"/>	DAU	Tiziano DEV DAU	_KEY_1015

0

Do not Send Send

- A- Order n: order number in the local workstation
 - B- Order Type: tag used to improve the searching task for the Supervisor user
 - C- Remarks: it is possible to add notes
 - D- List of possible recipients of the order: the list depends mainly by the ClientCode of the user and by the settings defined for the user by the Supervisor (Ref.Code, Group Id, Other Dest)
- In the example image, the ClientCode of the current user is "DAU" therefore orders can be sent to:
- other users with the same ClientCode (DAU)
 - the Head Office: which is not a real user but a "virtual" user and it is present in the recipients list of every user, except for the users with CompanyUser flag active.

2-After the selection of the recipients it is possible to  Send or  Do not Send the order by clicking on the apposite button.

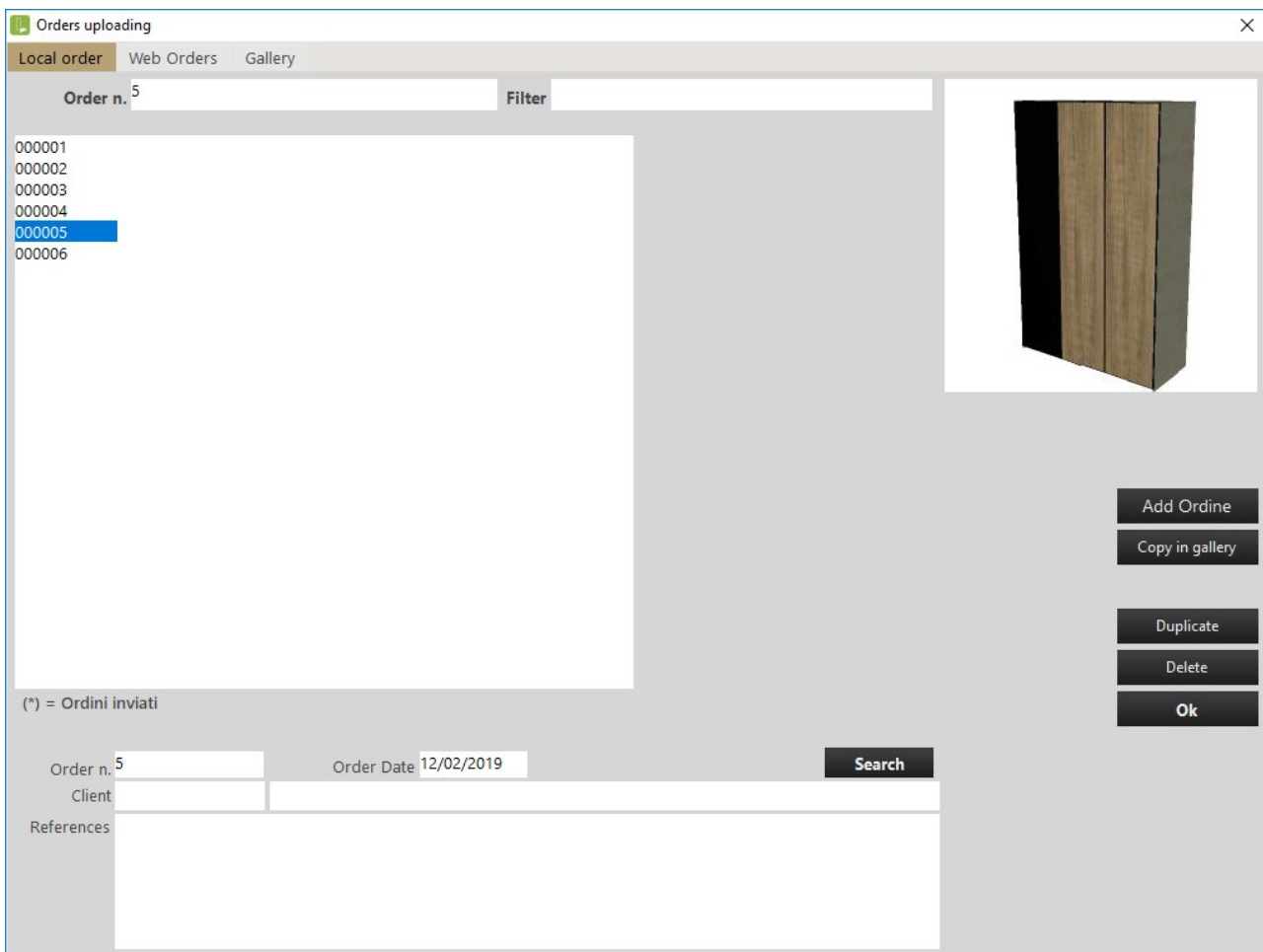
OPENING AN ORDER WITH DESIGNER3D

With a D3D license it is possible to open an existing order. There are two cases:

- order created by the current user (the user is the creator of the order)
- order received by another user

ORDERS CREATED BY THE CURRENT USER

After opening the D3D, click on  the select the **Local order** tab and the following window will appear:

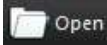


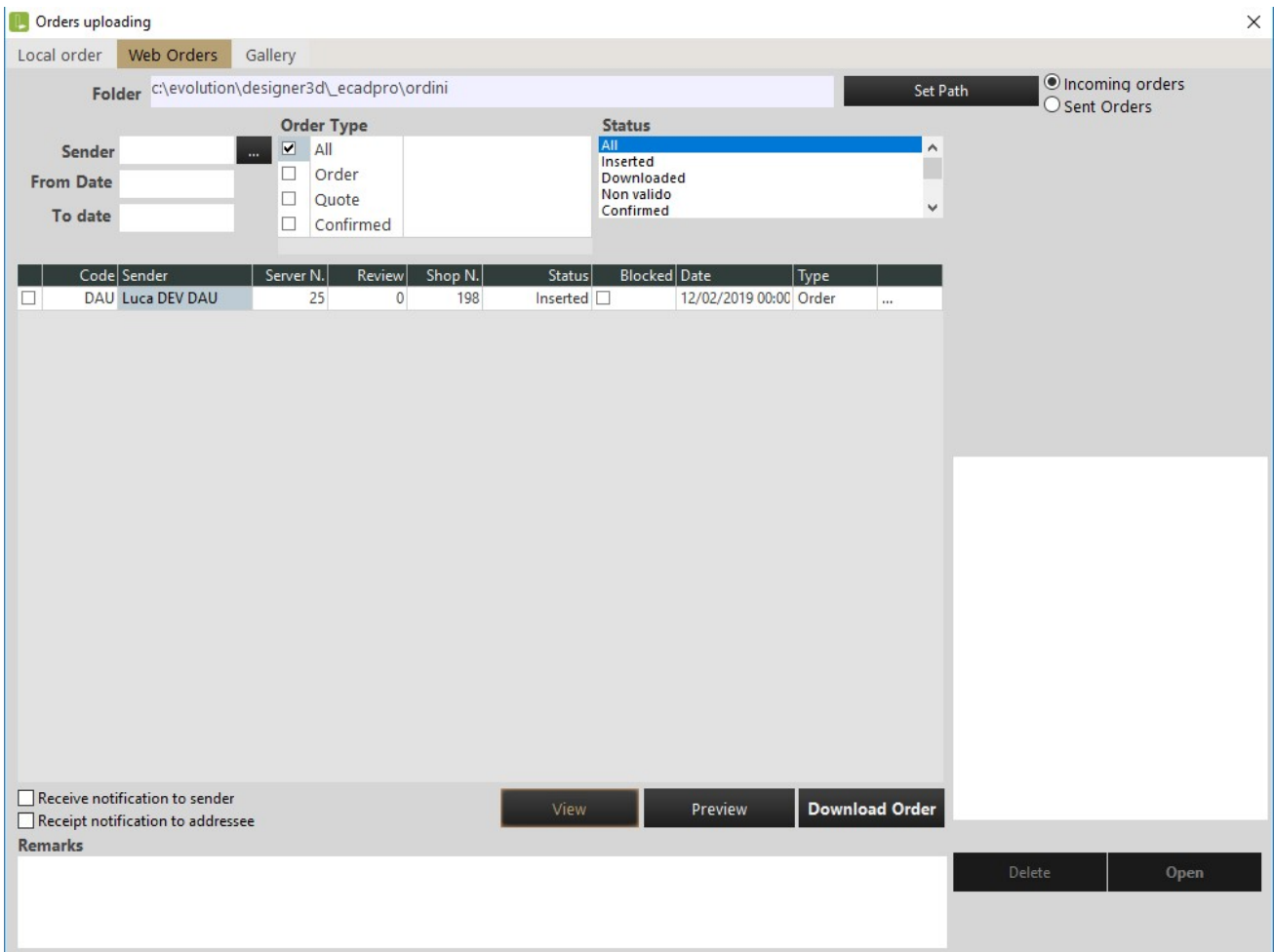
On the left part the orders created by the current user are displayed in form of a list. Select an order to display the related information that will be shown at the bottom part of the window.

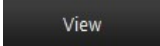
The following operations can be performed by clicking on the apposite button:

- Add Ordine** Adds the selected order to the current scene (the scene may already contain other items)
- Copy in gallery** Adds the selected order to the Gallery
- Duplicate** Duplicates the selected order
- Delete** Deletes the selected order
- Ok** Opens the selected order in C3D

ORDERS RECEIVED BY ANOTHER USER

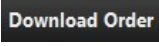
After opening the D3D, click on  the select the **Web Orders** tab and the following window will appear:



Select "incoming orders": Incoming orders Sent Orders and click on 

The orders will be displayed with the following information in columns:

- Selection box
- Code: client code
- Sender: order creator
- Server n: number of the order with server progressive unique numbering
- Review: revision number of the order
- Shop n: client number of the order
- Status: status of the order
- Blocked: if flagged, the creator user is not allowed to create a review of the order
- Date: date of creation
- Type: order type

To download an order, select it inserting the flag in the first column then click on  button.

It is possible to download more orders by flagging them in the first column and clicking on the **Download Order** button.

In the right part of the screen the name of the file downloaded will be displayed with the following format:

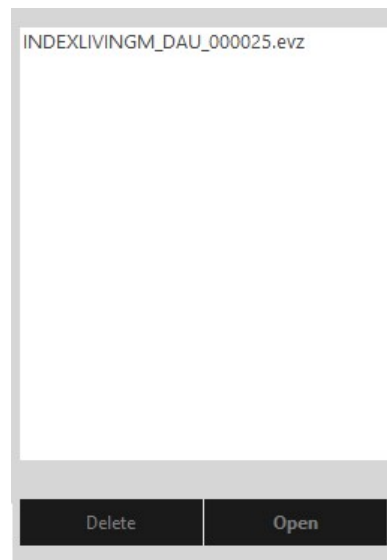
CATALOGUENAME_CODCLI_SERVERNUMBER.evz

This file is now saved in the folder specified in the upper part of the window:



The status of the order changes into "Downloaded".

To open an order select it from the list visible on the right and click on the **Open** button:



The **Order Header** tab displays the Header info and the **Configurator** tab displays the graphic representation of the order.

A new order number is assigned to the order where the first three numbers identify the specific Configurator3D workstation.

If the order includes a room plan this will be shown in C3D since this information is saved in the .evz file.

In order to delete the downloaded order (locally) select it first, then click on the **Delete** button.

TIP: a revision of an order creates a new order number on the server.